



T5 GREENSTREET - IP65

GS214

DESIGN

The luminaire body is made from high pressure die cast aluminium and consists of an IP65 combined lamp and ballast chamber, electronic ballast (ECG) and lampholders fixed to the rigid reflector assembly. The separate connection chamber allows for wiring and installation without need access to the optical chamber. The acrylic lens is hinged from the body and secured with four heavy-duty stainless steel catches. The slim profile is discreet, but allows maximum optical efficiency and spacing between poles.

APPLICATIONS

P type minor roads, Marinas, garden areas, entrances, security, walkways, driveways and local area. Will replace older TF20 fluorescent and 80W MV fixtures with reduced power consumption and improved lighting level.

ORDERING INFORMATION

Catalogue Number	Lamp Type	Nom. Weight (kg.)
------------------	-----------	-------------------

Standard Versions

GS214	FH14 4000K	3.6
GS224	FQ24 4000K	3.6

Integral PE Switch

GS214ME4P	FH14 4000K
GS224ME4P	FQ24 4000K
For white powder coat use suffix W Eg: GS214ME4/W	

Accessories

GS/LENS	Spare Acrylic Diffuser
GS214G/TRAY	14W Gear tray w. lamps
GS224G/TRAY	24W Gear tray w. lamps

TECHNICAL CHARACTERISTICS

- Optical and gear compartment IP65
- Connection compartment IP24
- Maximum windage area: - 0.07²m
- Weight (all types) - 3.7kg.
- Operating temps - ambient max 40c, min start -20c
- Electrical Specifications (input voltage 198-264V 0.94pf):
- AS/NZS158.3.1 Type 4 luminaire
- 84% LOR, UWLR 4%

Lamp	Start/run Current	Total Watts
2x FH14W	0.15 amps	29 Watts
2x FQ24W	0.24 amps	49 Watts

FEATURES

Uses new T5 lamps with excellent lumen maintenance - Only 10% loss at 18 000 hours. Choice of 14w or 24w lamp wattage and comes standard with pre-heat ECG for long lamp life.

AS/NZS1158.3.1 Type 4 luminaire, very low spill and glare

Designed and manufactured to comply with AS3771-1998

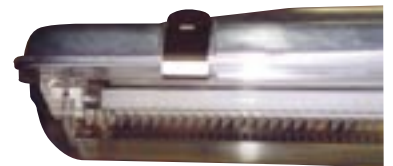
High colour rendering index for T5 lamps, CRI 85

Spigot entry is for 34mm OD x 80mm length spigot

UV stabilised acrylic lens.

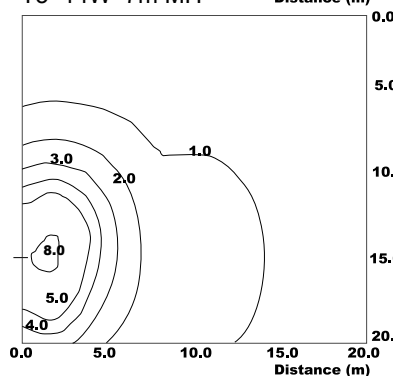
Can be supplied with a D2 base socket to suit a PE cell.

EMC compliant

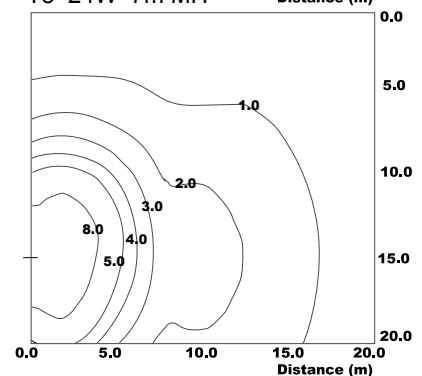


SPACING INFORMATION

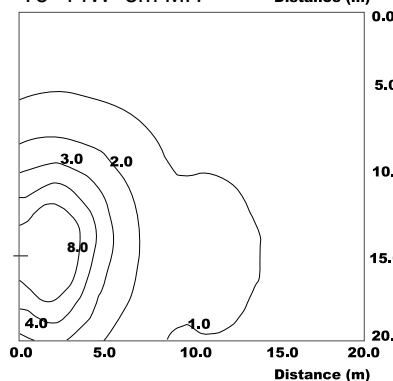
T5 14W 7m MH



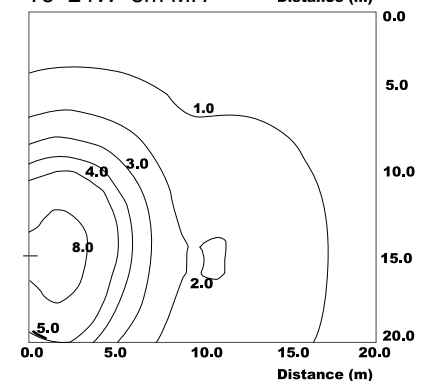
T5 24W 7m MH



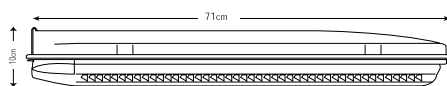
T5 14W 8m MH



T5 24W 8m MH



DIMENSIONS



T5 Lamp